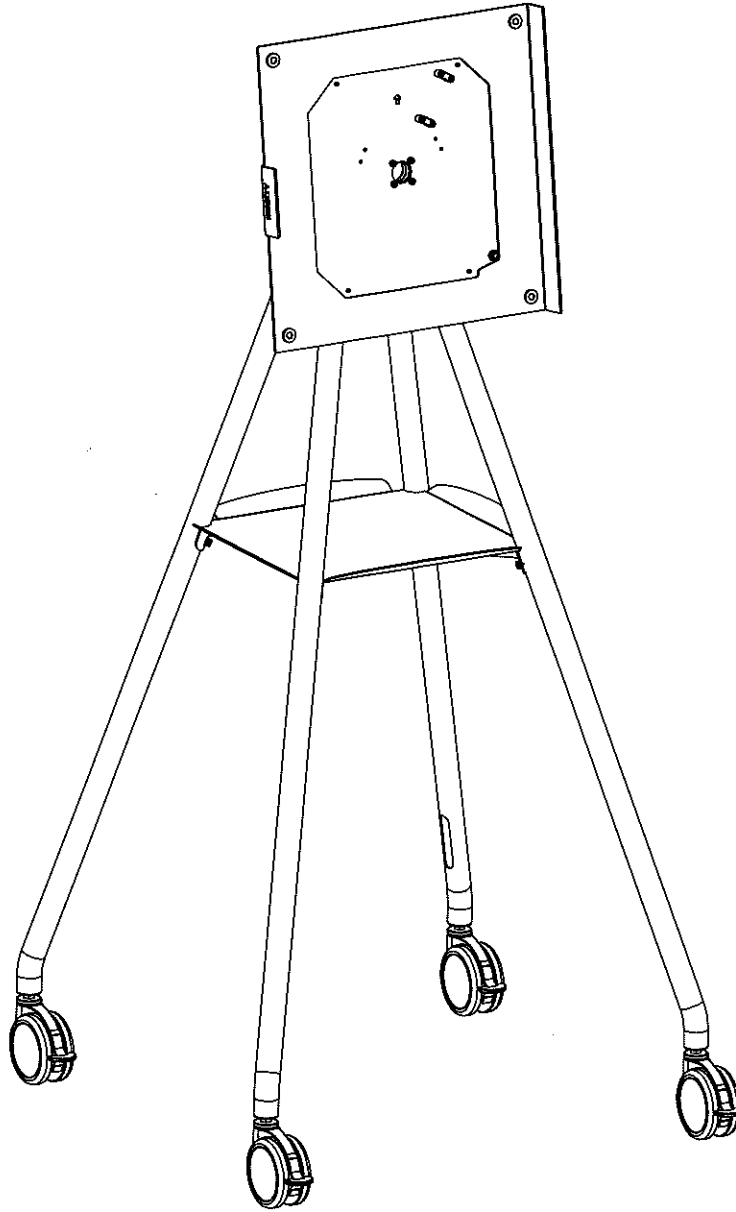


# i3SIXTY 2

## INSTALLATION MANUAL WH1370

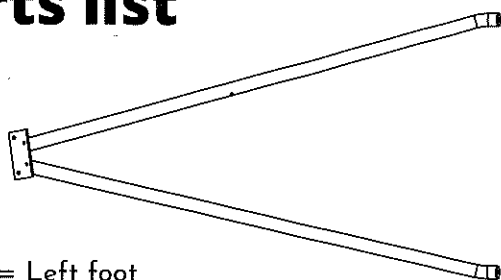


---

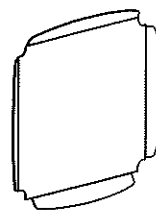
### Warnings:

- Please read the manual carefully before installation.
- This manual is intended for i3SIXTY 2 touch display only (VESA 400x400)
- Maximum load: 35kg

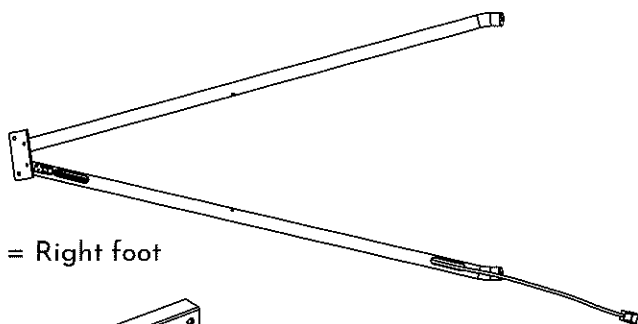
# Parts list



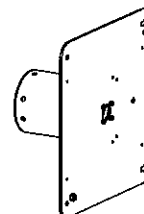
A = Left foot



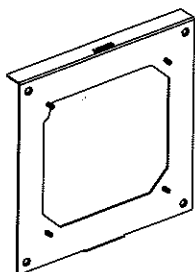
C = Tray



B = Right foot



D = Rotor



E = Mounting Plate



F = Left cover



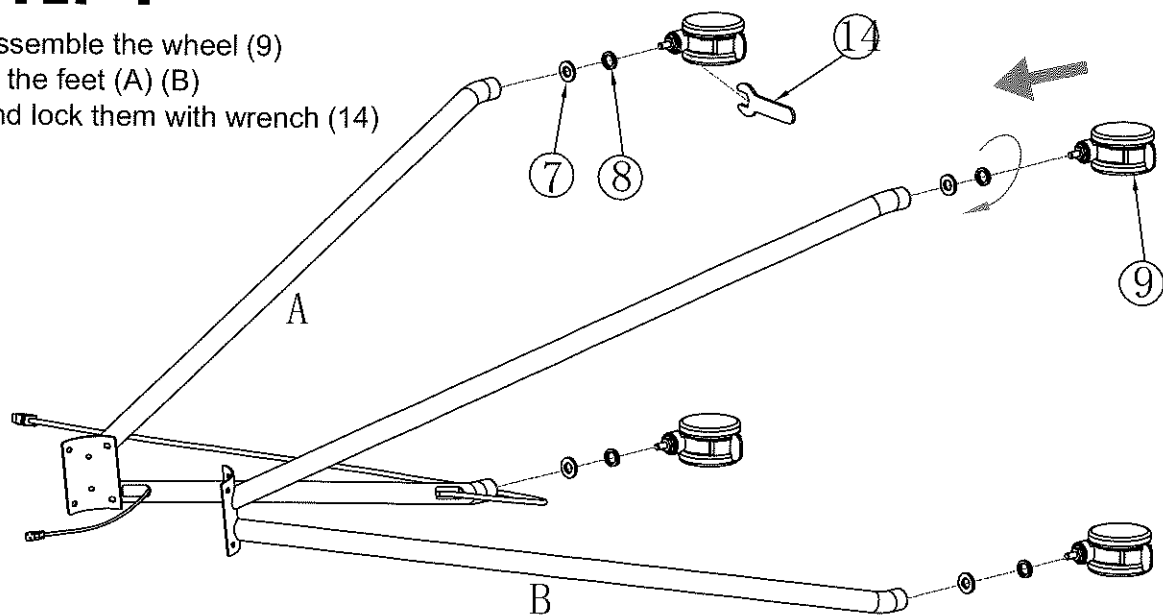
G = Right cover

## Content of the screw package

1	Cross recessed hex head screw	M6x15	4pcs	
2	Cross recessed hex head screw	M8x20	8pcs	
3	Cross countersunk head screw	M8x25	4pcs	
4	Anti-skid nut	M8	4pcs	
5	Cross head screw	M5x8	8pcs	
6	Cross round head screw	M4x12	4pcs	
7	Washer	17x10.5x2	4pcs	
8	Spring washer	18x10.5x1.5	4pcs	
9	Wheel	=	4pcs	
10	Washer	18x8.5x1.5	4pcs	
11	Cable clamp	=	2pcs	
12	Spacer	18x8.5x20	1pc	
13	Open wrench, small	13mm	1pc	
14	Open wrench, large	17mm	1pc	
15	Hex key	SW5	1pc	
x	Bring your own PHILLIPS screwdriver	PH2		

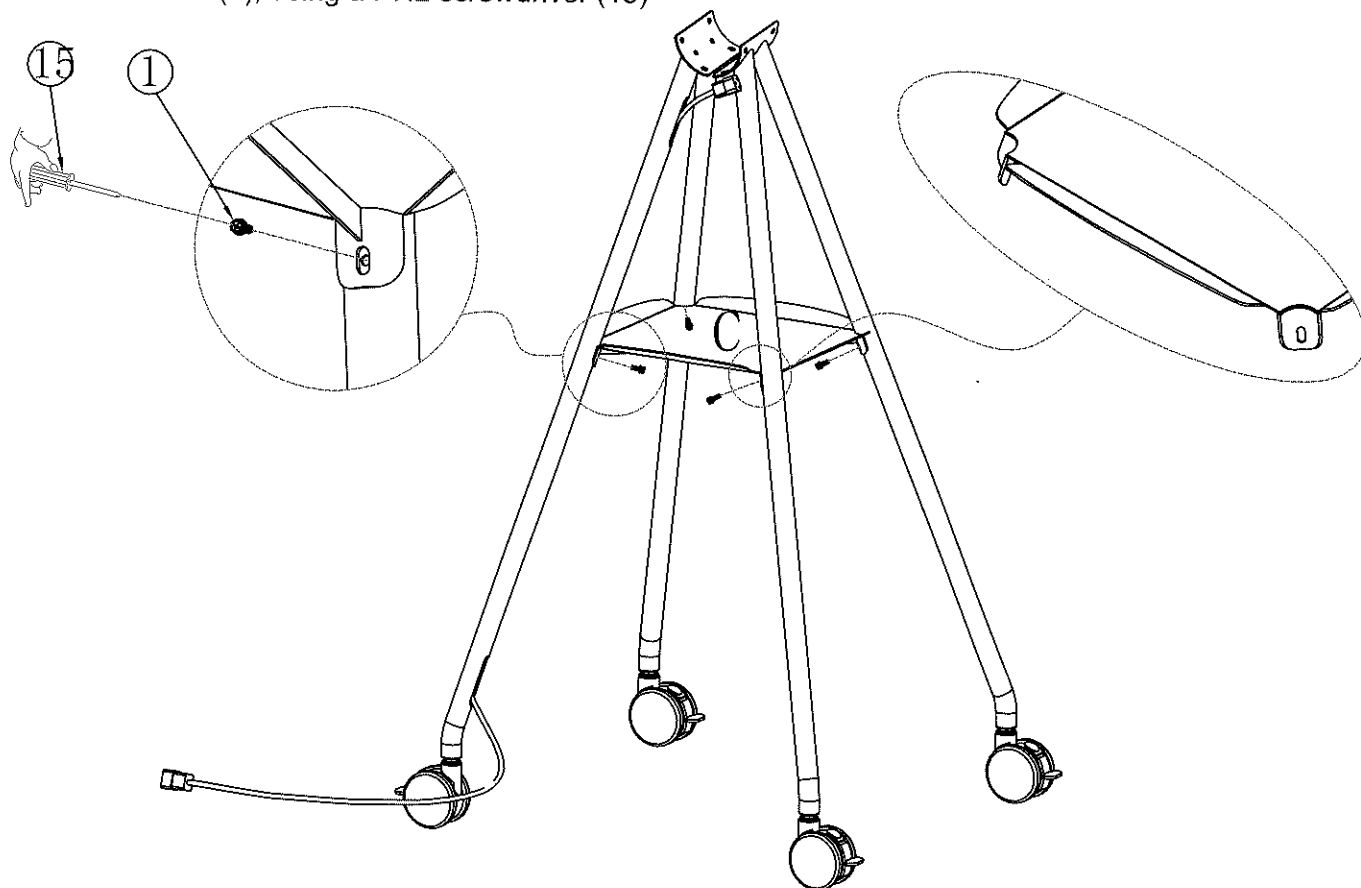
## STEP 1

Assemble the wheel (9) to the feet (A) (B) and lock them with wrench (14)



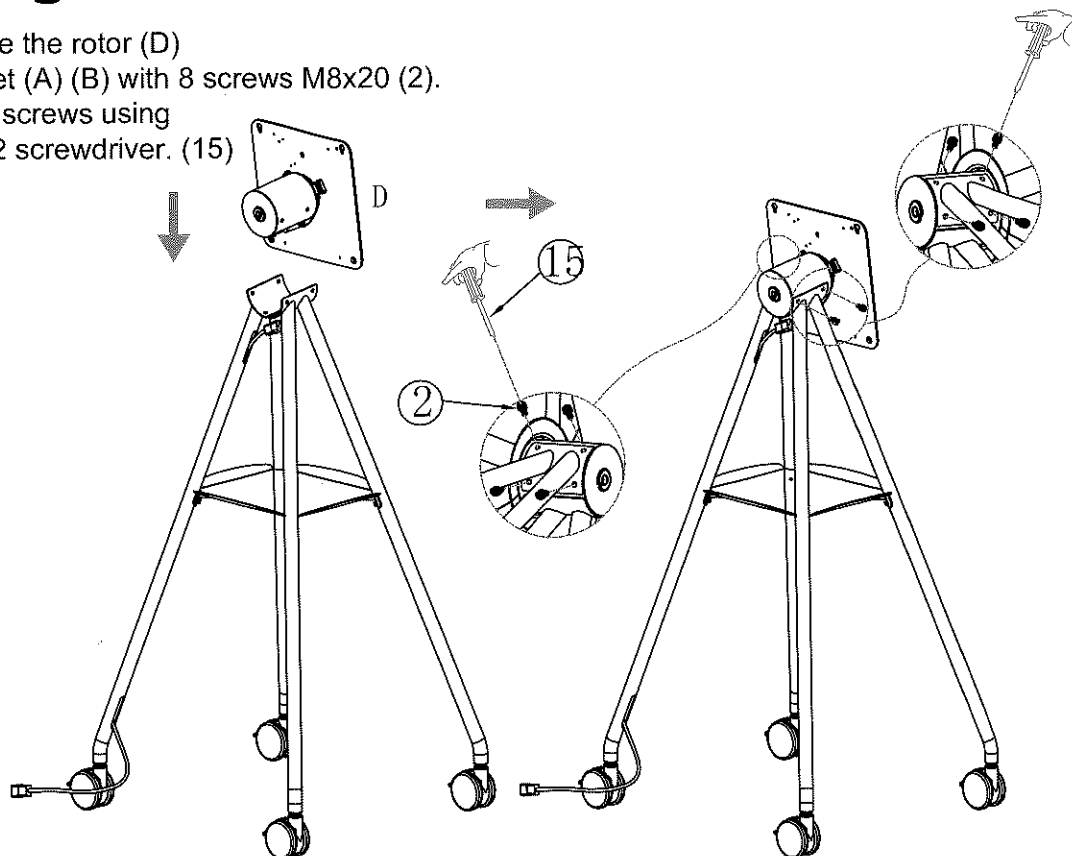
## STEP 2

Assemble the tray (C) to the feet (A) (B) with screws (1), using a PH2 screwdriver (15)



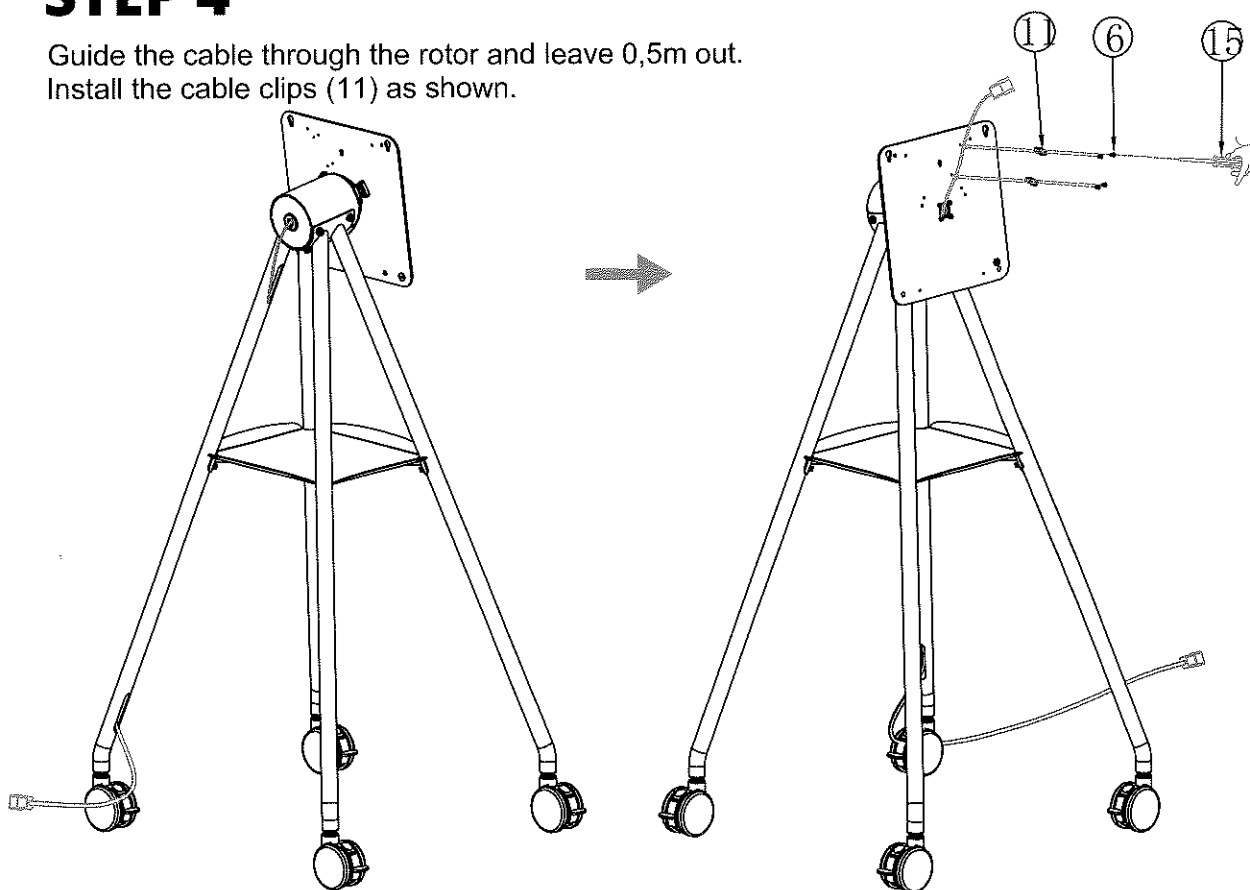
## STEP 3

Assemble the rotor (D) to the feet (A) (B) with 8 screws M8x20 (2). Lock the screws using your PH2 screwdriver. (15)



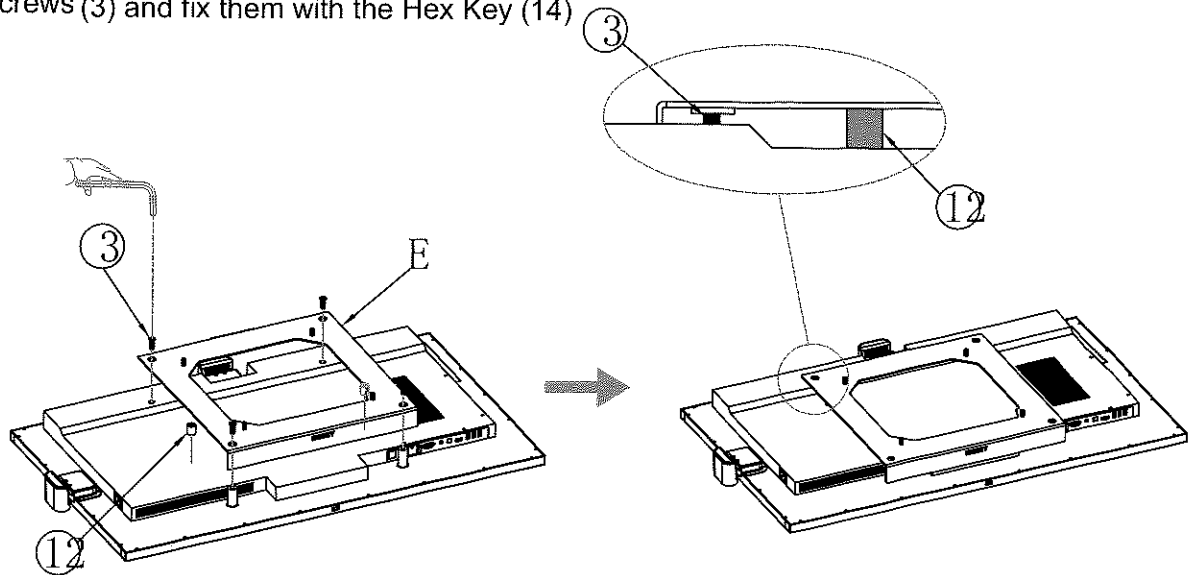
## STEP 4

Guide the cable through the rotor and leave 0,5m out. Install the cable clips (11) as shown.



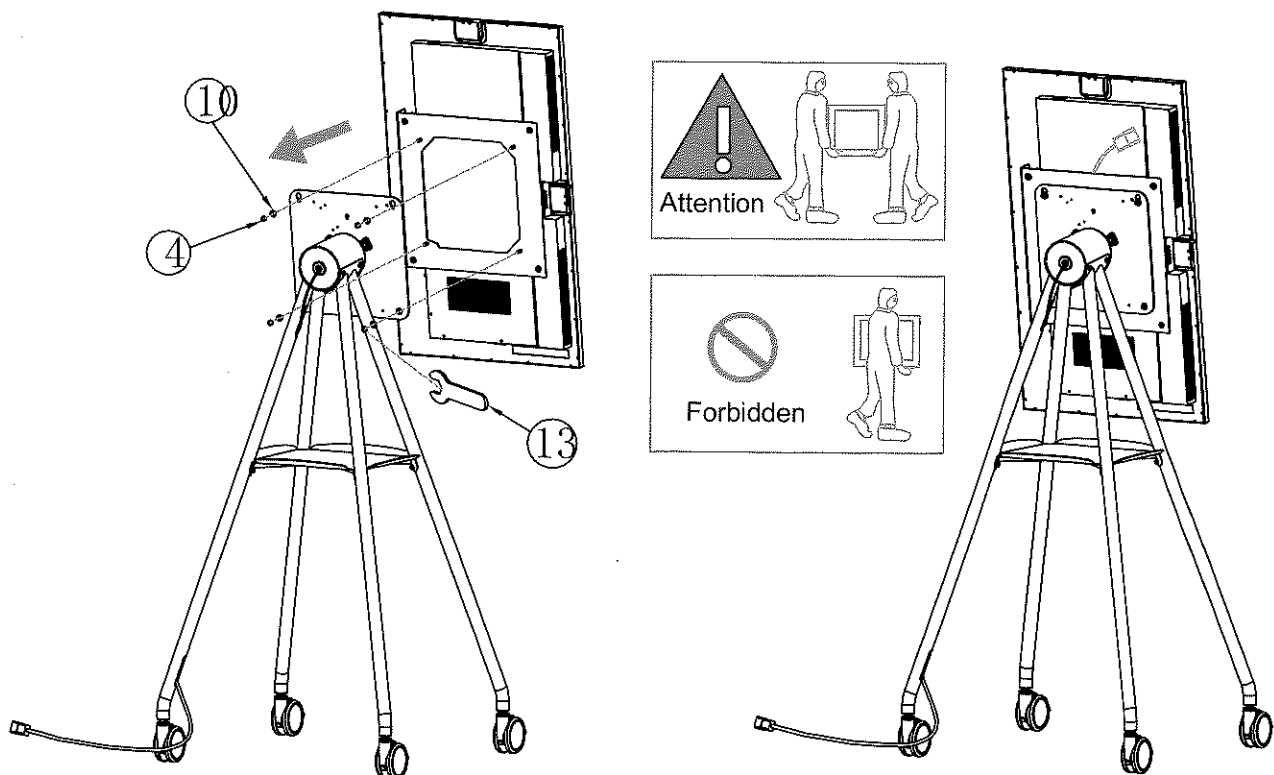
## STEP 5

Connect the mounting plate (E) to the i3SIXTY 2 display. It only fits in one way. Put the spacer (12) in between to keep the correct distance. Use 4 screws (3) and fix them with the Hex Key (14)



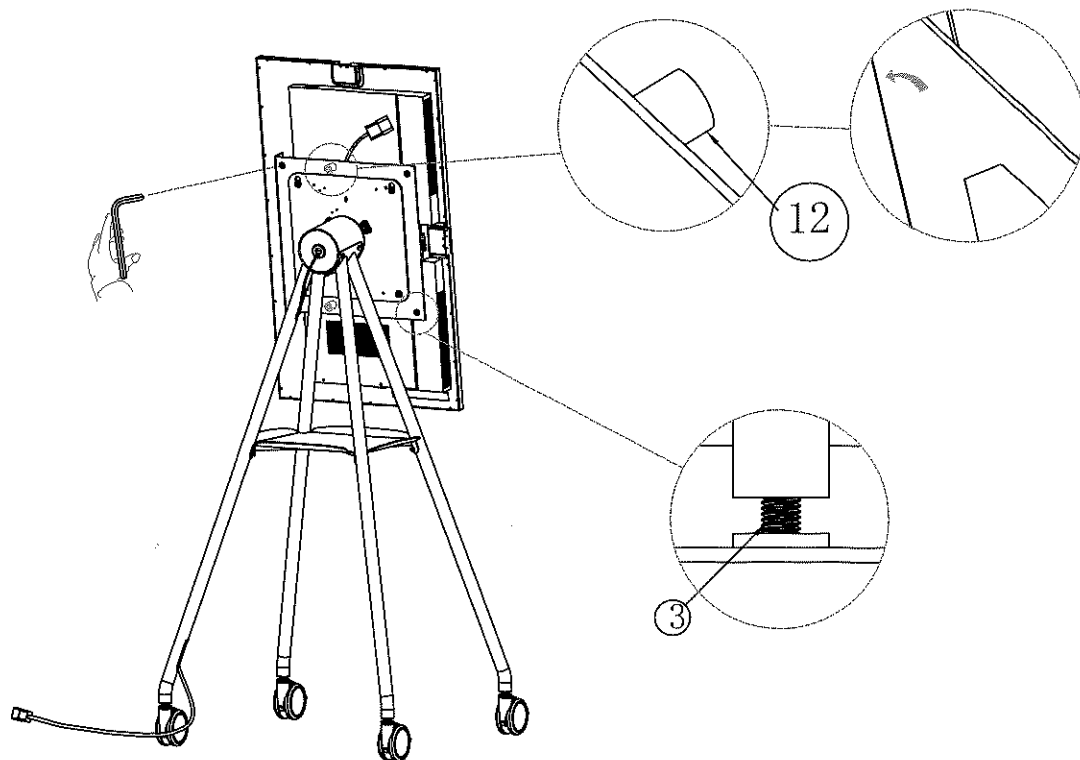
## STEP 6

Guide the power cable through the central hole of the mounting plate. Install the display to the frame, using 4 spring washers (10) and 4 nuts (4) and tighten with the M8 wrench (13)



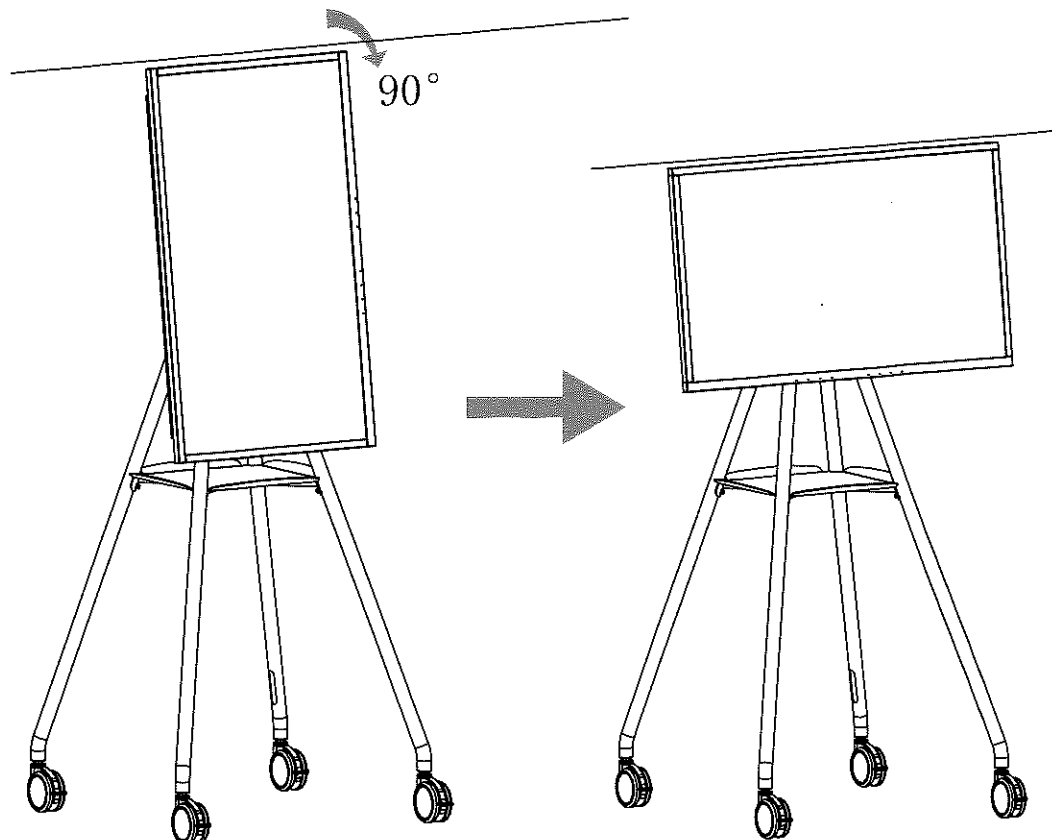
## STEP 7

Remove the spacer (12) and tighten all 4 screws (3) that hold the display.  
Use the Hex Key (14)



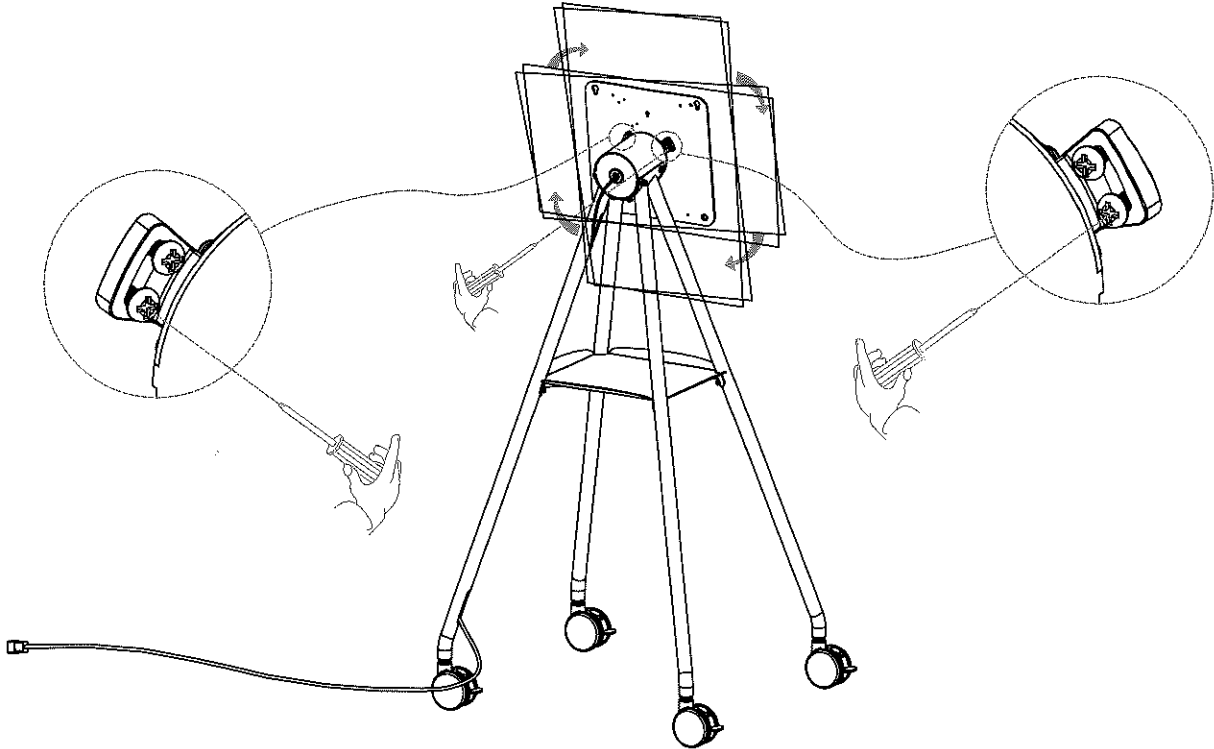
## STEP 8

Check the vertical and horizontal position of the display.  
If correct, proceed to step '10'.



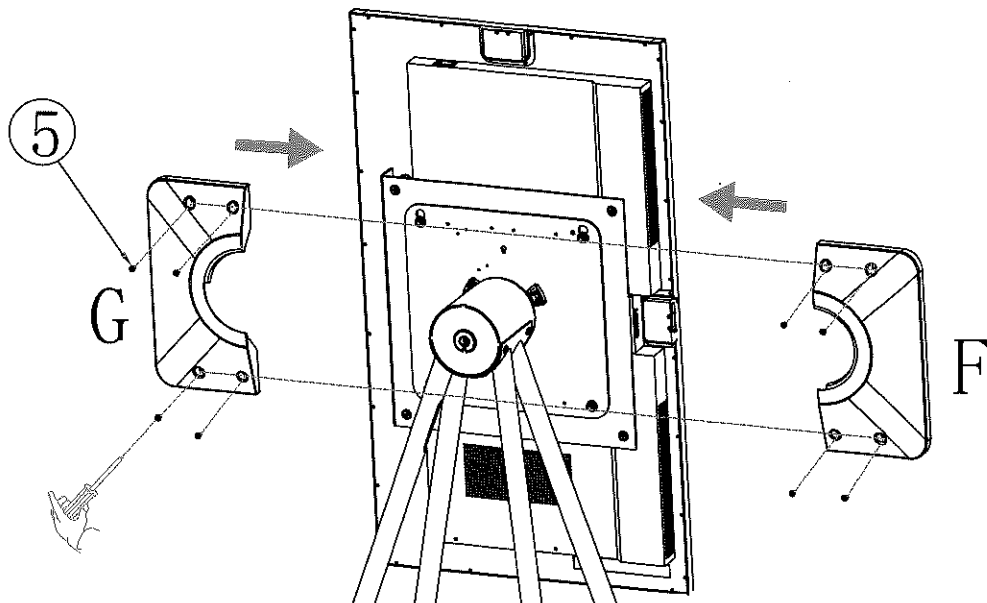
## STEP 9

ONLY IF THE DISPLAY IS NOT IN A CORRECT HORIZONTAL OR VERTICAL POSITION:  
Loosen the two screws of the endstop. Hold the display in the correct position.  
Push the endstop to its end and tighten the screws firmly.



## STEP 10

Install the left and right rear covers (F,G) on the rotor (D).  
Use 8 screws M5x8 (5) and your PH2 screwdriver.



**DONE**

# **i3SIXTY 2**

To find more information on the i3SIXTY 2, visit the website:



## **ANY QUESTIONS OR TROUBLE INSTALLING?**

First contact your dealer that you have bought the product from.

or

contact us on <https://www.i3-technologies.com/en/support/>

i3-TECHNOLOGIES NV  
Logistics and Service Center:  
Nijverheidslaan 60  
B8540 DEERLIJK  
Belgium