



# Timelink Signal Tools User Guide

## I. Select Language

Open the application and select the target language.

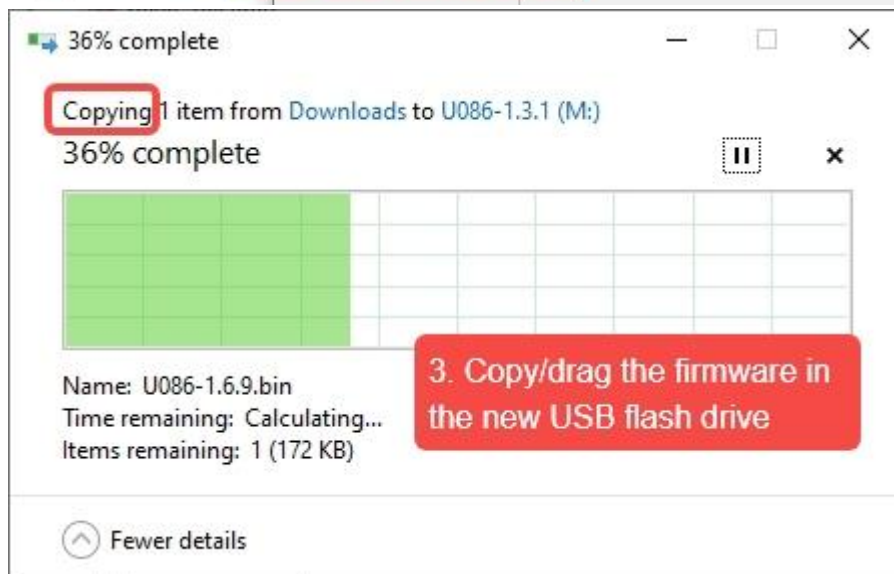
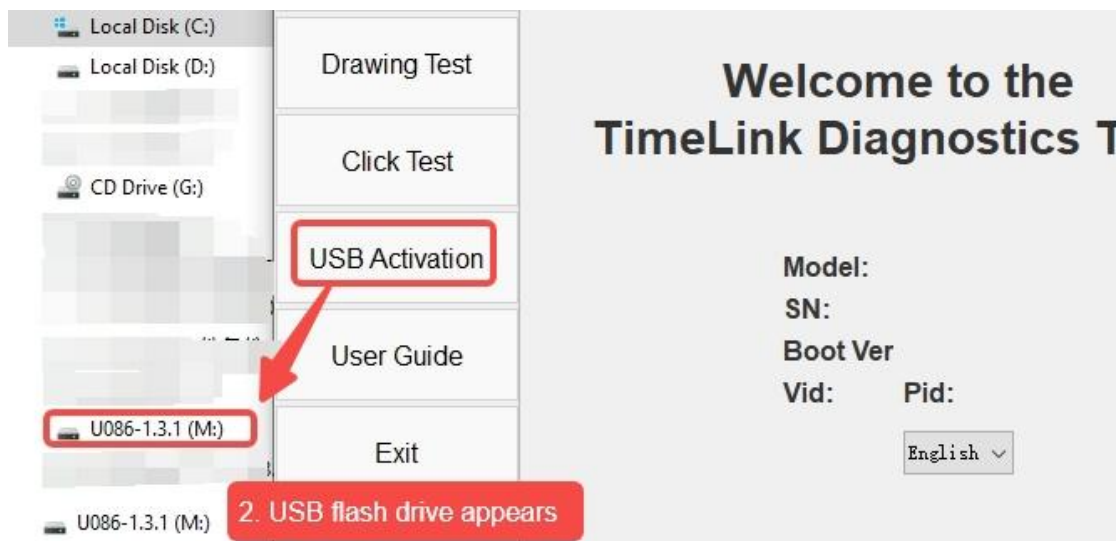
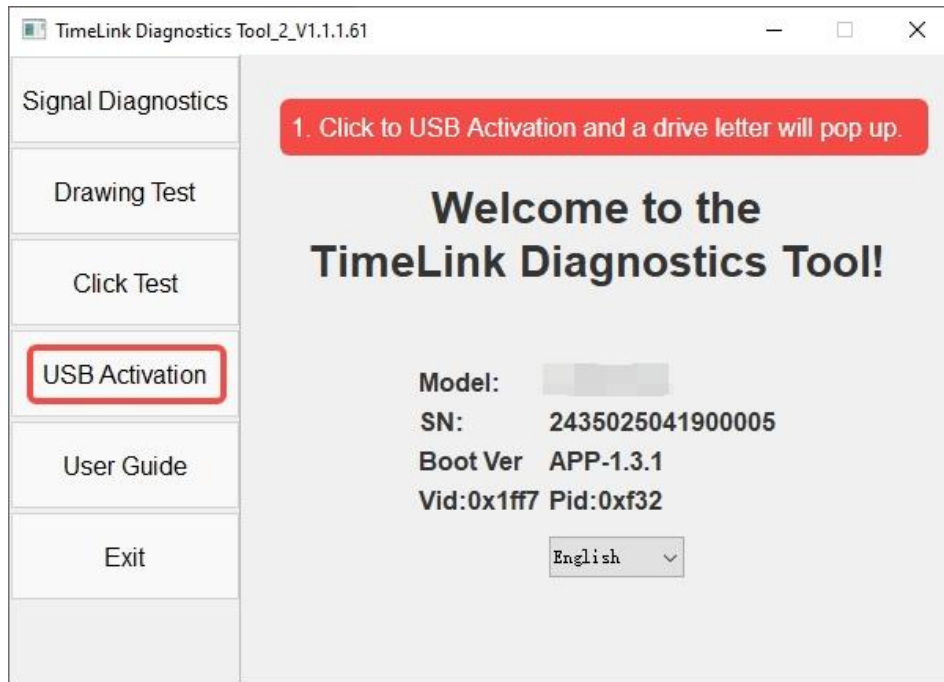


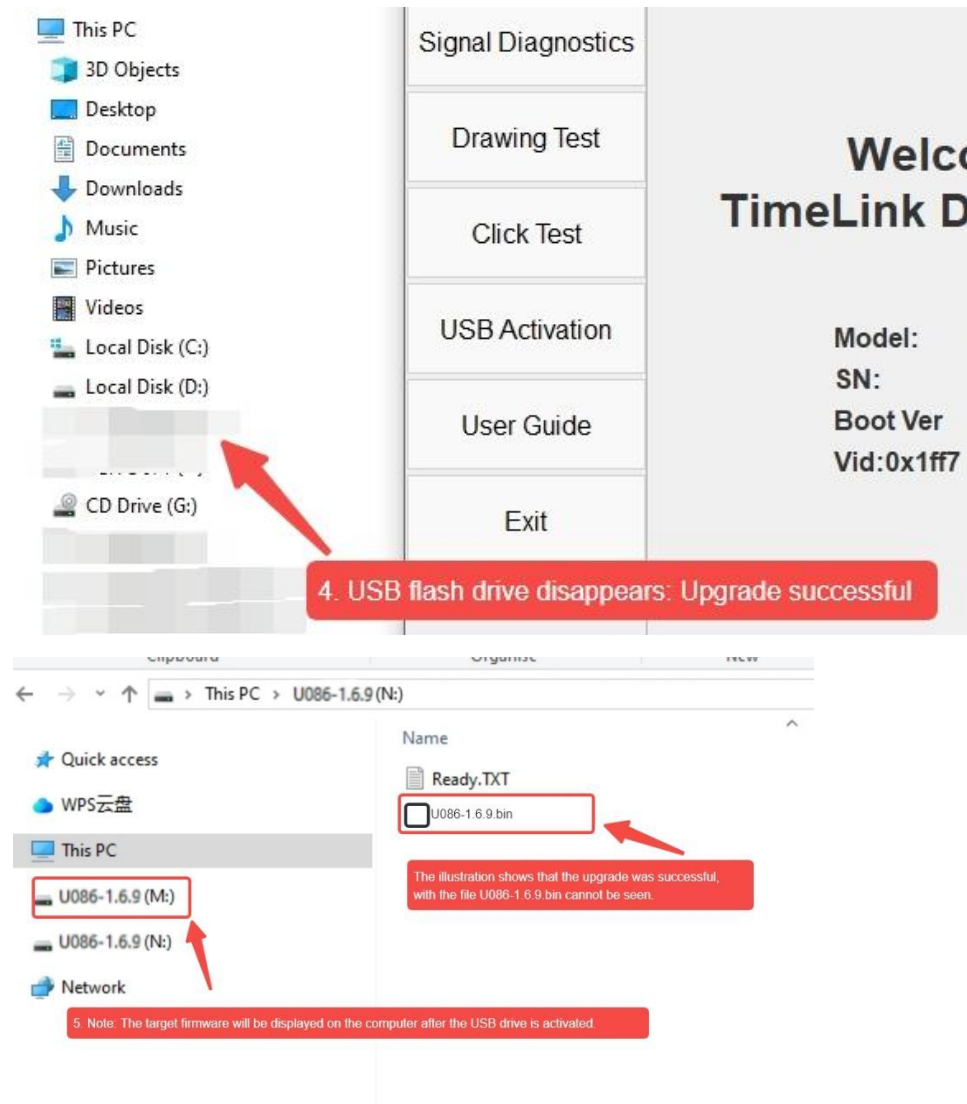
## II. Scope of Use

1. **Firmware Upgrade:** Update firmware.
2. **Signal Detection:** Check tube information to preliminarily troubleshoot hardware issues.
3. **Drawing Test:** Use drawing lines to troubleshoot penetration phenomena.
4. **View Supported Touch Points.**

## III. Firmware Upgrade

1. **Firmware Upgrade Process:** Click the [Activate USB] button on the main interface, and a drive letter will pop up. Drag/drop or copy the file to the popped-up USB drive and wait for the upgrade to complete.





## Possible Issues

1. **No version information and signal in the signal interface:** Check device VID, PID, and add PID, VID via software.
2. **Device information exists, but no signal information:**
  1. Only connect powered USB; connecting two USBs to one bare frame computer may cause conflicts.
  2. Check if the computer's Bluetooth is turned on. If so, turn it off to avoid interference from virtual serial ports overlapping with Bluetooth.
  3. If COM0 appears, delete the ComDB in the registry (HKEY\_LOCAL\_MACHINE\SYSTEM\CurrentControlset\ControlCOM Name Arbiter), then reinstall the CH34 series USB serial port driver and perform a power-off restart (not a powered restart).



3. **Bluetooth Terminal Detection Issues:**

1. Check firmware version. Some firmware versions require connection with a pen, while others do not.
2. Bluetooth terminals may match other nearby pens.

4. **Serial Port Detection Issues:** Check the serial port model (only CH34 series supported); check if RT is wrongly connected or if the serial port module is damaged.

5. **Imask Channel Detection Issues:** Analyze feedback; send data via Bushound [find device with VID = 0x05AC, PID=0x0265, send 0xcd, 0x03, 0xb2], and check if there is feedback. If so, locate and troubleshoot the issue.

6. **Whole Machine Testing:** If signal anomalies occur, click the [Signal Adjustment Button] in the signal interface to adjust the signal before retesting.